

STG Inspection Reports

1

Inspection Type Performed (验货状态): ☒ Final inspection ☒ First inspection ☐ during inspection ☐ Re-inspection

Product Description (产品描述): Shoulder bag	Vendor: (供应商)
Customer (客 人):	Contact Person(联系人): Angelina
P.O. No. (订单号码) NIS-4070 4073	Inspection Address (验货地点): Huojie, DG
P.O. Q'ty (订单数量): 1512PCS	Tel/Fax No.: /
Inspection Firm: System Technology Group	Inspection Date(验货日期): Aug.1.2013
Lot Size(验货数量): see below list	Arrival Time(到达时间): 10:20
Production Status (生产进度): 100 % completed 100 % packed	Leaving Time(离开时间): 18:30

NO.	Item No. SKU# (产品编号)	Total Quantity (订单数量)	Total Cartons (总箱数)	Finished Qty by Vendor (供应商完成的数量) pcs	Unit in inner carton (入内箱数)	Unit in Master carton (入外箱数)	NW (净重)	GW (毛重)	Size of Carton (外箱尺寸)	
							Kg		Length*Width*Height (CM)	Cubic
◆	K-3001									
1	#6 Eggplant	200	20	200	/	10	14.9	16.5	57 x 43 x 62	
2	#15 Indigo	200	20	200	/	10	14.9	16.5	57 x 43 x 62	
3	#9 Walnut	112	11	112	/	10	14.9	16.5	57 x 43 x 62	
◆	K-2072									
1	#680 Blue	250	25	250	/	10	15	17.5	64 x 42 x 60	
2	#250 Pink	250	25	250	/	10	15	17.5	64 x 42 x 60	
3	#401 Black	250	25	250	/	10	15	17.5	64 x 42 x 60	
4	#870 Brown	250	25	250	/	10	15	17.5	64 x 42 x 60	

The inspection results of the above-mentioned merchandise were found as follows:

(In comparison to purchase order or reference sample, as available)

BUSINESS CASE BUYING GUIDE & CHECKLIST

1. Inspection Checklist:

Reference Sample (参考样品): ☒ Yes 1 PCS ☐ NO

Accept	Reject	N/A	Detail			
<input checked="" type="checkbox"/>	<input type="checkbox"/>	<input type="checkbox"/>	Shipping mark(箱唛):	<input checked="" type="checkbox"/> front	<input checked="" type="checkbox"/> side	<input type="checkbox"/> inner
<input checked="" type="checkbox"/>	<input type="checkbox"/>	<input type="checkbox"/>	Carton tape seal manner:	<input checked="" type="checkbox"/> H model	<input type="checkbox"/> 井 model	<input type="checkbox"/> 一 model <input type="checkbox"/> others
<input checked="" type="checkbox"/>	<input type="checkbox"/>	<input type="checkbox"/>	Carton binding manner (封箱方式):	<input type="checkbox"/> staple (打钉)	<input checked="" type="checkbox"/> stick (粘胶水)	
<input checked="" type="checkbox"/>	<input type="checkbox"/>	<input type="checkbox"/>	Country of origin (生产地):	<input checked="" type="checkbox"/> Made in china	<input type="checkbox"/> Made in	
<input checked="" type="checkbox"/>	<input type="checkbox"/>	<input type="checkbox"/>	Carton(纸箱):	<input checked="" type="checkbox"/> Appearance(外观)	<input checked="" type="checkbox"/> Dimension(尺寸)	<input checked="" type="checkbox"/> Material(材质)
<input checked="" type="checkbox"/>	<input type="checkbox"/>	<input type="checkbox"/>	Item no.(产品料号):			
<input checked="" type="checkbox"/>	<input type="checkbox"/>	<input type="checkbox"/>	Style/color(样式/颜色):			
<input checked="" type="checkbox"/>	<input type="checkbox"/>	<input type="checkbox"/>	Shipping code(出货编号):	<input checked="" type="checkbox"/> master	<input type="checkbox"/> inner	
<input checked="" type="checkbox"/>	<input type="checkbox"/>	<input type="checkbox"/>	Barcode no.(条码):			
<input checked="" type="checkbox"/>	<input type="checkbox"/>	<input type="checkbox"/>	Brand/Logo:			
<input checked="" type="checkbox"/>	<input type="checkbox"/>	<input type="checkbox"/>	Drop test (跌箱测试):	<input type="checkbox"/> master carton(外箱)	<input type="checkbox"/> product (产品)	
<input checked="" type="checkbox"/>	<input type="checkbox"/>	<input type="checkbox"/>	Marking/Label:	<input checked="" type="checkbox"/> main	<input type="checkbox"/> composition	<input type="checkbox"/> size <input type="checkbox"/> price <input type="checkbox"/> others
<input checked="" type="checkbox"/>	<input type="checkbox"/>	<input type="checkbox"/>	Package type (包装形式):	<input type="checkbox"/> Blister	<input type="checkbox"/> Color box	<input type="checkbox"/> Window box <input checked="" type="checkbox"/> others

STG Inspection Reports

☒ ☐ ☐ Language printed (印制语言) ☒ artwork (美工的) ☐ manual (说明书)
☒ ☐ ☐ Warnings (警告标语) : ☐ Artwork ☒ Poly-bag (塑胶袋) (opening over 17cm must punch hole 超过 17cm 以上必须要有透气孔)

2. Inspection method /standard applied /inspection result (检查方式/标准/验货结果) :

ANSI/ASQC Z1.4-1993 or MIL-STD-105E single sampling plans general inspection Level II for normal inspection

Samples random selected from 16 cartons, are total 85 cartons

Item No.	Finished Qty by Vendor	Checked Qty by STG	Class & AQL						Found of defects			Total Defects	Defect Rate	Inspection Result
			Critical (0)		Major (1.0)		Minor (2.5)		CR	MA	MI			
			Ac	Re	Ac	Re	Ac	Re						
K-3001														
#6 Eggplant	200	32	0	1	1	2	2	3	0	0	1	1		ACC
#15 Indigo	200	32	0	1	1	2	2	3	0	0	3	3		ACC
#9 Walnut	112	32	0	1	1	2	2	3	0	0	1	1		ACC
K-2072														
#680 Blue	250	32	0	1	1	2	2	3	0	2	4	6		REJ
#250 Pink	250	32	0	1	1	2	2	3	0	2	3	5		REJ
#401 Black	250	32	0	1	1	2	2	3	0	1	2	3		ACC
#870 Brown	250	32	0	1	1	2	2	3	0	0	3	3		ACC

3. Details of defects found:

Defects description(不良品描述)	Critical	Major	Minor
K-3001 Eggplant:			
Back pocket stitching thread loosed x 1pcs;	0	0	1
Total	0	0	1
K-3001 Indigo:			
Glue mark on the lining x 1pcs;	0	0	1
PU damaged x 1pcs;	0	0	1
Sliver mark on the side ear shape x 1pcs;	0	0	1
Total	0	0	3
K-3001 Walnut:			
Dirty mark on the PU surface x 1pcs;	0	0	1
Total	0	0	1
K-2072 Blue:			
Back pocket zipper tape is too narrow, so scratched the PU x 3pcs;	0	2	1
Side seam sewing wrinkled x 1pcs;	0	0	1
Glue mark on the PU surface x 1pcs;	0	0	1
Main bag zipper tape stitching thread loose x 1pcs;	0	0	1
Total	0	2	4
K-2072 Pink:			
Back pocket zipper tape is too narrow, so scratched the PU x 2pcs;	0	1	1
PU damaged x 2pcs;	0	1	1
Glue mark on the shoulder strap;	0	0	1
Total	0	2	3

STG Inspection Reports

3

K-2072 Black:			
Back pocket zipper tape is too narrow, so scratched the PU x 1pcs;	0	1	0
Thread loosed;	0	0	1
Poor sewing of shoulder pad;	0	0	1
Total	0	1	2
K-2072 Brown:			
PU damaged of card pocket x 1pcs;	0	0	1
Poor binding of shoulder pad x 1pcs;	0	0	1
Poor sewing of main bag side seam x 1pcs;	0	0	1
Total	0	0	3

4. Test Properties:

Product specification checks on reduced sample size, details as follows:

NO.	Description	Sample size	Finding
1	N/A		
2			
3			
4			

5. Inspection Conclusion (验货总结)

Base upon the results presented, the inspected Lot is judged to have been

OVERALL INSPECTION RESULT (验货总结)

Accepted (接受) ☐

Rejected (验退) ☒

On Hold (待确认) ☐

REMARK(备注):

1. K-2072 Blue and Pink---Rejected, zipper slider scratched the PU leather, due to the zipper tape of back packet is too narrow; Stitching thread is too loose on the bag top; glue mark is not clean; PU scratched exposed white backing etc, please factory one by one to full checking these problem and after repair that inform STG to do re-inspection. Vendor told us rework the 2 styles need 2 days.

Supplier

供应商签名 : Ms. liang

Date: 2013.8.1

Inspector

QC 签名: Steven Date: Aug.1.2013

THIS REPORT REFLECTS OUR FINDING AT THE TIME AND PLACE OF INSPECTION.

THE REPORT IS JUST A PRELIMINARY RESULT FOR REFERENCE AND DOES NOT EVIDENCE SHIPMENT. OFFICIAL RESULT MUST BE ACCORDING TO THE TAPED REPORT ISSUED BY STG

6. Quality Check Points: maybe critical, major or minor depending on severity. All points should be photographed and documented when found.

- Material** — If nylon, is the weave even and is the material without scuffs or snags? Confirm the Dannie. If leather, does it have markings and slight color variations? Check for type of leather.
- (材质: 如果是尼龙布, 请确认布的纹路是否平顺, 有没有勾线的问题, 确定其丹尼数, 如果是皮革, 需注意标记及色差, 检查是哪种皮革类型)
- Solid Construction**---Is the case solidly constructed? Are the top and bottom of the case in line? Do the covers close properly and does the case have proper shape when stuffed? Is the mesh front fairly tight along the side of the body? (袋子的架构, 袋子的结构是否坚固, 请检查整体袋子, 从头到尾是否坚固, 袋子上的盖子是否顺着袋子的形状合上, 前袋上有网袋部分, 有没有服贴在袋子上, 会不会有过松或过紧的情形)
- Hardware**— Are the buckles sturdy and in good condition? Do the buckles snap sharply together? Is there any flashing on the part lines of the buckles, the plate color correct and not rust on the surface etc ? (五金配件: 注意

插扣公和母能不能扣上去，是否坚固，是否会松脱，插扣本体的品质好不好，一定要平滑和平顺，不能有突起物,五金电底颜色是否正确，是否有生锈等不良情形)

- **Handles**--Is the handle soft enough for comfort, yet firm enough to keep its shape? (把手: 把手的材质握起来是否舒适，是否坚固，提起袋子后是否会变形)
- **Logo** – Is logo centered and level on case? (Logo: 请注意 logo 在袋子上是否有放正，有没有歪掉的情形)
- **Finished Edges**--How are the edges finished? Does the fabric on the handle's edges separate where the material meets? (Check by rubbing a finger across the edges.) Are burnished edges smooth and tight? (Check by rubbing a thumb down the edge of the case for smoothness, and across to be sure it does not separate.) Are bound, or turned, edges neat, and sewn close to the edge? If edges are welted, are welts sewn in securely? (边线: 注意袋子上车边的情形是否完整，把手上的车缝线有没有缝好， 会不会有脱线的情形)
- **Lining** – Is the lining well fitted to the interior, (not sagging or over tight)? Are the edges well sewn? Are there any marks on the interior? ((内里:袋子的内里是否有缝好在袋子里， (是否会有过紧或过松的情形) 车边是否很平顺，内里有没有任何脏污的情形)
- **Stitching**--Is the stitching evenly spaced, with no loose ends? On an extended-edge design, stitches should not run into the edge. Check for thread remnants or frayed, unfinished material edges. (缝纫: 袋子整体的缝线是否完整，有没有尾端脱线的情形)
- **Interior**--Are file dividers tiered at the top and gusseted on the sides? Are the tiers deep enough to keep papers securely in place? Are the gussets big enough for easy access? Will it accommodate legal-sized file folders? Are partitions and pockets made of materials with good stitch-holding characteristics, rather than from chipboard or non-saturated paper?(内部: 内部的配件袋是否有很整齐的排列? 注意内袋里的配件袋的材质是否正确，整体的车边是否完整)
- **Balance**--Do portfolios (except underarm styles), attachés, and brief bags stand up by themselves? (平衡: 文件包，公事包和旅行包类的袋子，一定要能站立平放的)
- **Zippers**--Are zippers appropriately sized? Do they travel smoothly? Do they stay closed? Are they sewn in so they don't catch on linings? Check for flashing on the part lines of the zipper pullers. (拉链: 袋子上的拉链和拉头的尺寸是否正确，拉链滑动是否顺畅，拉链闭合功能是否 OK，会不会夹到里布，拉片要很平顺，不能有突出来的情形)

7. Inspection Report Photo Record (验货照片)


		
Finish goods	Finish goods	Finish goods

1. K-3001 Eggplant:

		
Bar code	Product view	Product view

		
Product view	Product view	Product view
		
Product view	Product view	Product view
		
Product view	Product view	Side mark
Defects view:		
		
Back pocket stitching thread loosed		
2. K-3001 Indigo:		

		
Bar code	Product view	Product view
		
Product view	Product view	Product view
		
Product view	Product view	Product view
		
Product view	Product view	Product view
		
Product view	Product view	Product view

		
Product view	Product view	Product view
		
Product view	Product view	
Defects view:		
		
PU damaged	Glue mark on the flap lining	Silver mark unclean
3. K-3001 Walnut:		
		
Product view	Product view	Product view

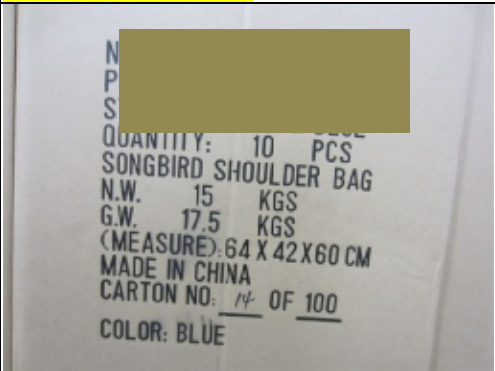
		
Product view	Product view	Product view
		
Product view	Product view	Product view
		
Product view	Product view	Product view
		
Product view	Product view	Product view
		
Product view		

Defects photos



Dirty mark on the bottom corner of bag

4. K-2072 Blue:



Side mark



Front mark



Packed view



Packed view



Packed view



Packed view



Packed view



Packed view



Packed view



Product view



Product view



Product view



Product view



Product view



Product view



Product view



Product view



Product view



Product view



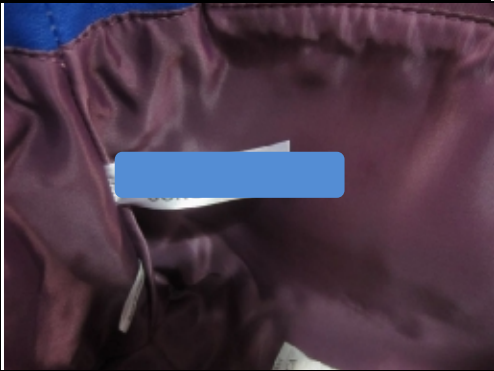
Product view



Product view



Product view



Product view



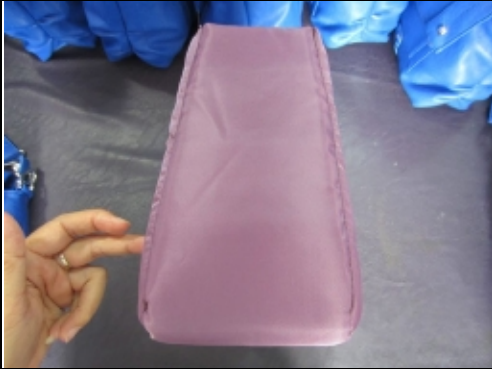
Product view



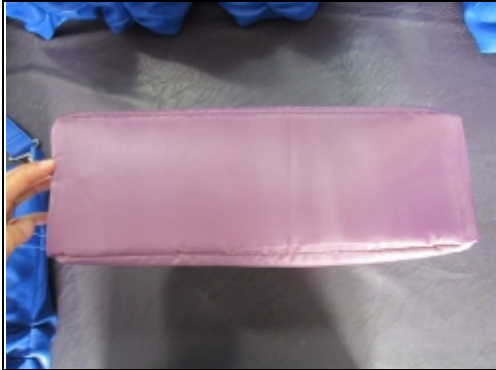
Product view



Product view



Product view



Product view



Product view



Product view



Product view



Product view



Product view



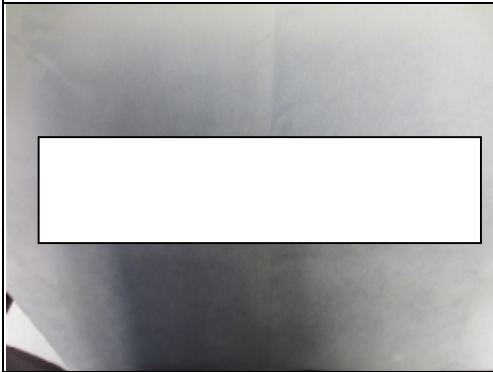
Product view



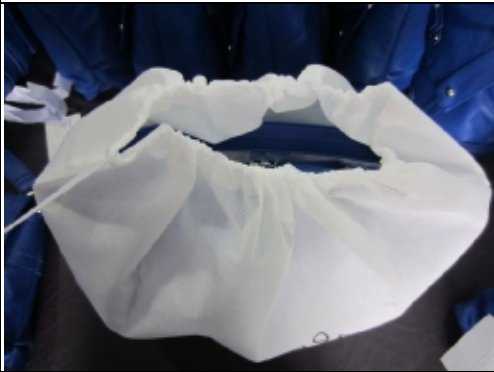
Product view



Product view



Product view



Product view



Checking size



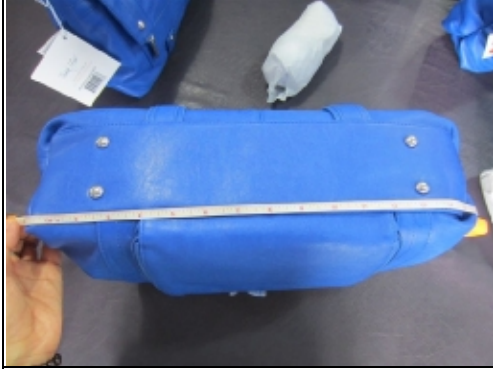
Checking size



Checking size



Checking size



Checking size



Checking size



Checking size

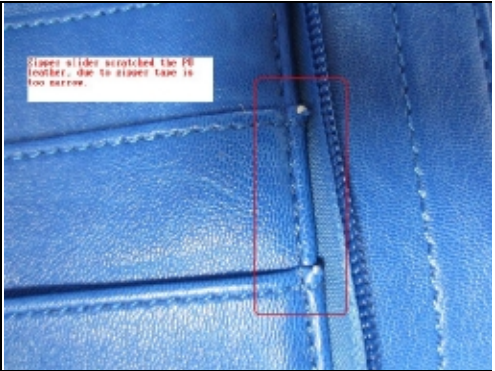


Checking size

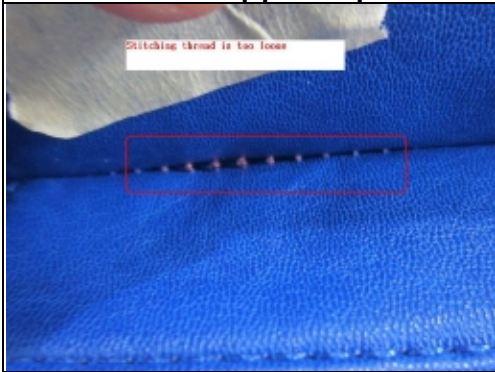


Checking size

Defects view:



Zipper tape is too narrow, so zipper slider scratched the PU leather

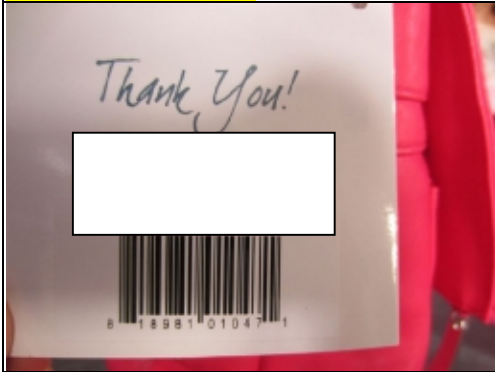


Stitching thread is too loose

Side seam sewing wrinkled

Glue mark on the PU surface

5. K-2072 Pink:



Bar code



Product view



Product view



Product view



Product view



Product view



Product view



Product view



Product view



Product view



Product view



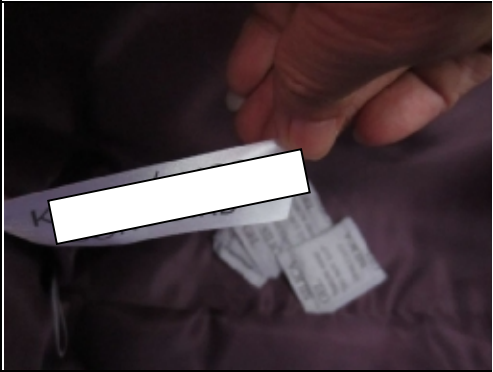
Product view



Product view



Product view



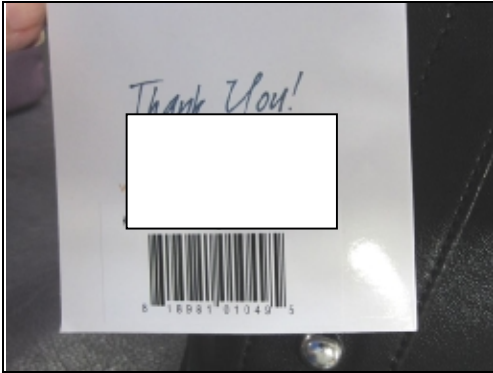
Product view

		
Product view	Product view	Product view
		
Product view	Product view	Side mark

Defects view:

		
Zipper slider scratched the PU leather, due to zipper tape is too narrow		PU damaged
		
PU damaged	Glue mark on the shoulder strap	

6. K-2072 Black:



Bar code



Product view



Product view



Product view



Product view



Product view



Product view



Product view



Product view



Product view



Product view



Product view

		
Product view	Product view	Product view
		
Product view	Product view	Product view
		
Product view	Product view	Product view
		
Product view	Side mark	
Defects view:		



Zipper slider scratched the PU leather

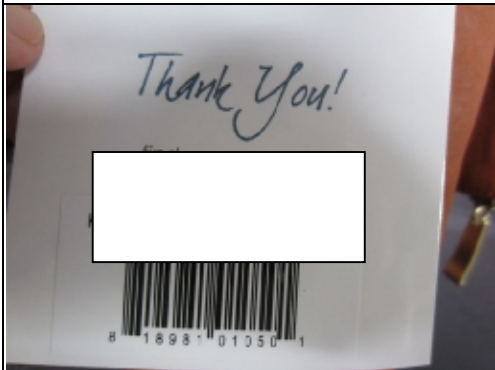


Front pocket stitching thread loosed



Poor binding of shoulder strap

7. K-2072 Brown:



Bar code



Product view



Product view



Product view



Product view



Product view



Product view



Product view

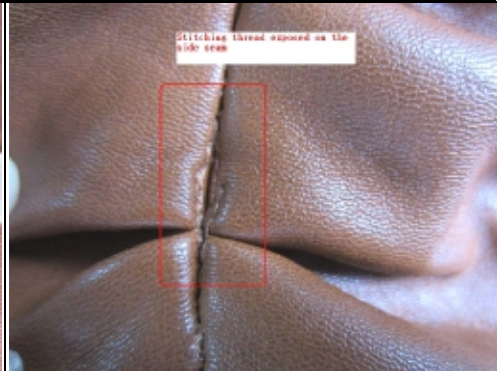


Product view

		
Product view	Product view	Product view
		
Product view	Product view	Product view
		
Product view	Product view	Product view
		
Side mark		
Defects view:		



PU damaged



Side seam thread exposed



Poor binding of shoulder strap